

Salve Regina University

Digital Commons @ Salve Regina

Newport Books

Newport Collection

1899

Newport and its Advantages as a Summer Resort

J. G. Weaver & Son

Follow this and additional works at: https://digitalcommons.salve.edu/newport_books



Part of the [United States History Commons](#)

Recommended Citation

J. G. Weaver & Son, "Newport and its Advantages as a Summer Resort" (1899). *Newport Books*. 23.
https://digitalcommons.salve.edu/newport_books/23

Rights Statement



In Copyright - Educational Use Permitted. URI: <http://rightsstatements.org/vocab/InC-EDU/1.0/>

This Item is protected by copyright and/or related rights. You are free to use this Item in any way that is permitted by the copyright and related rights legislation that applies to your use. In addition, no permission is required from the rights-holder(s) for educational uses. For other uses, you need to obtain permission from the rights-holder(s).

Newport

AND ITS ADVANTAGES



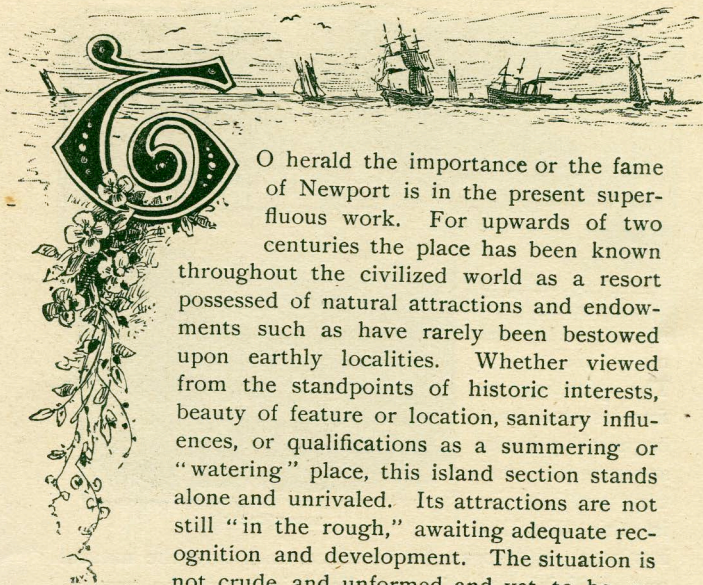
AS
A
Summer
Resort

Liberty Printing Co.
107 Liberty St. N.Y.

Newport
AND
its Advantages
AS
A
Summer
Resort

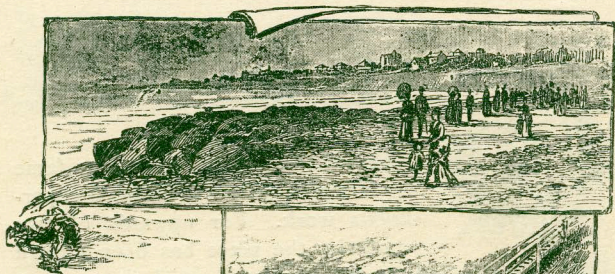
PRINTED AND ENGRAVED BY
GILES LITHO. & LIBERTY PRINTING COMPANY,
72 WARREN ST. AND 62 COLLEGE PL., N. Y.

NEWPORT.



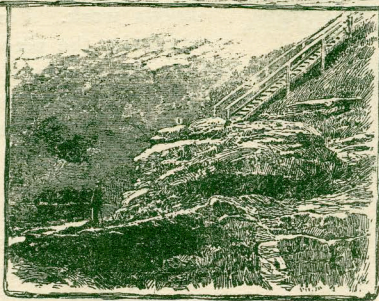
O herald the importance or the fame of Newport is in the present superfluous work. For upwards of two centuries the place has been known throughout the civilized world as a resort possessed of natural attractions and endowments such as have rarely been bestowed upon earthly localities. Whether viewed from the standpoints of historic interests, beauty of feature or location, sanitary influences, or qualifications as a summering or "watering" place, this island section stands alone and unrivaled. Its attractions are not still "in the rough," awaiting adequate recognition and development. The situation is not crude and unformed and yet to be reclaimed from its natural conditions and set apart to the highest uses and pleasures of mankind. Its institutions and establishments are not of recent planting, raw and untried, a series of experiments to fit them to the wants of a community yet to be moulded. On the contrary, the

first settlers of this island were contemporaries of the Pilgrim Fathers. The charms of the locality became known to some of the earliest visitors and emigrants to this country, who were people of wealth and cultured tastes, and some of the oldest, best known and most revered of the Newport institutions have been local for



VIEW OF CLIFF FROM
BEACH.

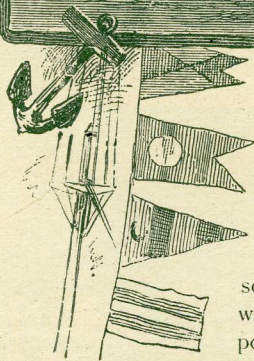
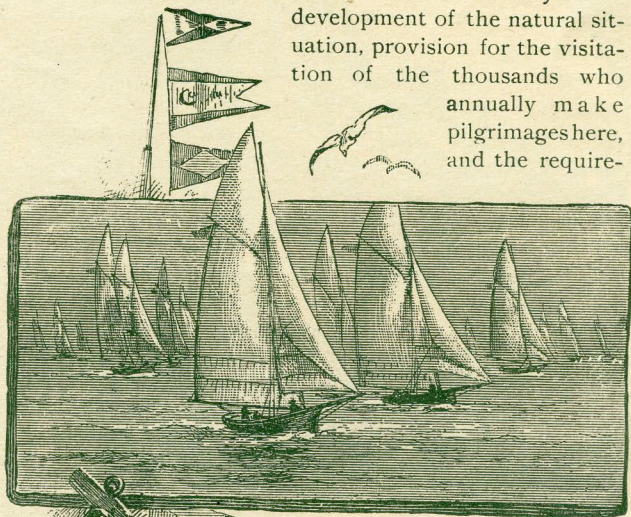
many decades. The planting of fine estates here began early in the seventeenth century, and increase in this direction



FORTY STEPS.

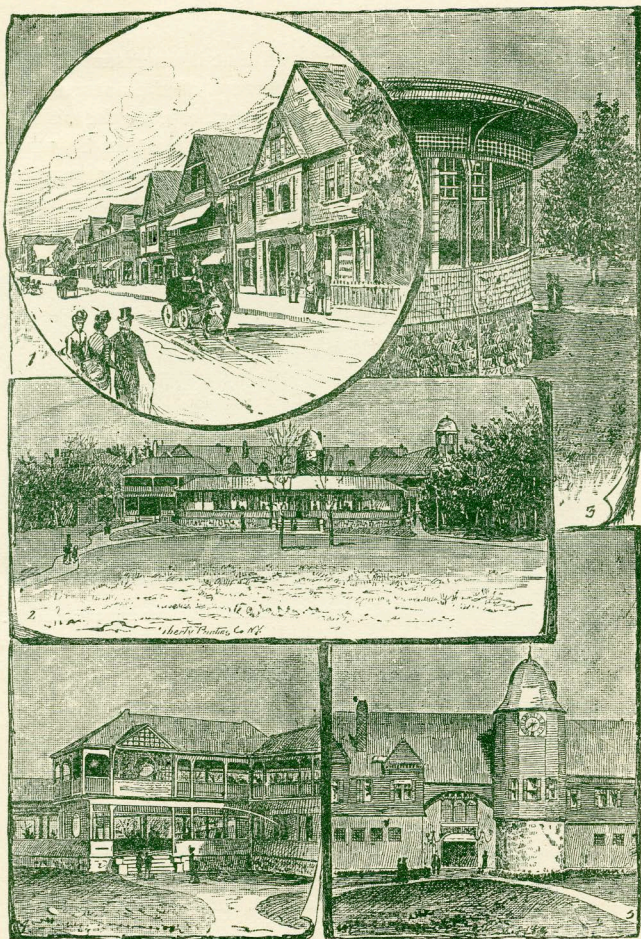
has been going forward ever since, until now the natural and artificial attractions go hand in hand, the one enhancing the other, the result in both departments displaying itself in scenery beyond measure grand and picturesque. The permanent population has been fitted to the place by generations of growth and experimental

connection with it, so that now all that is necessary to the development of the natural situation, provision for the visitation of the thousands who annually make pilgrimages here, and the require-



THE N. Y. YACHT CLUB IN NEWPORT HARBOR.

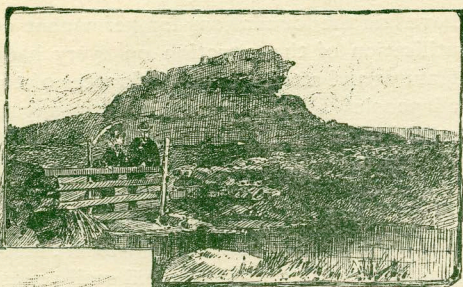
ments of a summer population made up of representatives of the highest and best social elements on earth, is fully appreciated and fostered here. But not alone to those of high social position and independent wealth do the attractions of Newport appeal. Although, as has been stated above, these elements have seconded nature in multiplying beauties all about, and



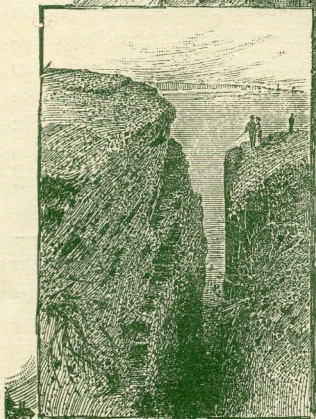
VIEWS OF THE CASINO.

have laid the foundations for permanent occupation and utilization of the situation on every hand, the natural features and attributes and influences of the place are for all peoples and conditions, nor can any sect or class or organization monopolize them. While it is true that the society of Newport is "leavened" by the presence and activity of those who seem in some sort to be the "pets" of fortune and intellect, this feature only serves to ensure for the island a high-toned, first-class position among the watering-places, and really enhances its pleasures and its satisfying attractions for every person who makes its acquaintance. The magnificent driveways, the well-ordered and time-honored parks, libraries and public institutions; the grand Casino, embodying all that is liberal and brilliant in social life; the beautiful estates, villas, mansions, cottages and residences of every name and order, with their special features and ornamentation—all these and many other things in connection, enable Newport to present a series of delights in artificial and social, as well as natural, departments, and call together that assemblage of representative humanity which only distinguishes a few remarkable localities upon earth's surfaces.

Let no one make the mistake, however, of supposing that by common practice, an obtained order of things, or through any unwritten law, or even desire, regarding Newport, only those who have wealth or claims upon the "highest circles" of society can find pleasure or entertainment, or to the full enjoy the bountiful natural provision of the place. On the contrary, ample and the most varied accommodations have been established for all, and all are equally welcomed here.



1. HANGING ROCK.



2. PURGATORY.



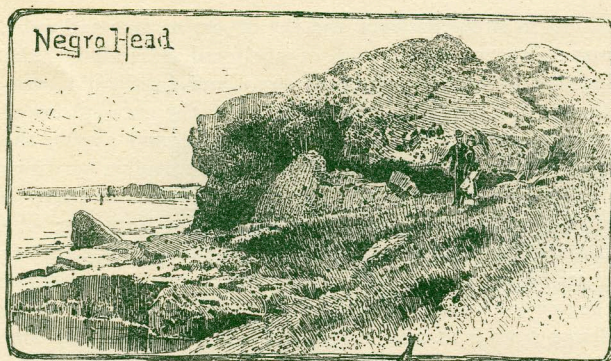
3. CLIFF ARCH.

Viewed from the standpoint of natural attractions alone, Newport indeed is a wonderful place. Its shores, alternating rockbound bluffs and cliffs and ledges with stretches of smoothest surf-washed beach; its undulating uplands of greenest growth, from which the ocean is on some side, and usually on all sides visible, the magnificent outlooks on every hand, including Old Ocean

rolling in all his majesty, and the silvery surface and quiet rest of waters land-locked or sheltered from all but the lightest breezes ; the rugged spurs and headlands, overshadowing points of danger, which the navigators of every clime long since learned to dread and avoid ; the glorious drives for miles, following the tortuous windings of the coast, and dipping and departing here and there to reach positions of special or surpassing interest ; the boating and fishing and bathing ; the tempered summer heats ; the glorious invigorating and recreative powers of the sunshine and the island breezes, laden with influences drawn from land and sea, which stimulate like wine and renew like choicest cordials ; these are sufficient of themselves to satisfy the desires of the summer sojourner, even were they not supplemented, as here they are, by unequalled social and artificial enjoyments.

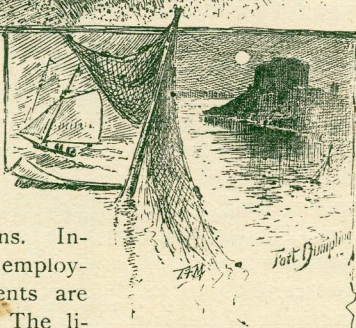
Indeed, it is impossible to rehearse all the attractions and attributes of Newport in such manner that one who knows nothing of them, experimentally, may comprehend them. The fact that they have for so long a time proved a magnet whose power is felt in every part of the world, ought certainly to weigh as evidence ; and to-day Newport stands higher in estimation as a watering-place than ever before in its history.

The varied character of the employments and the enjoyments of Newport are among its chief attractions. One may drive, or find, the finest walks imaginable over various sections of the island. To become a bather in the surf, or to sit upon the overhanging bluffs, or walk upon the sands, while the beach is animate with bathers, is a matter of choice with the individual. The Casino presents a multitude of social attractions, in which all are



free to join. To ride upon Bellevue Avenue, or to witness the grand "turn-outs" of others, are equally pleasurable occupations. Indoor and outdoor employments and amusements are in equal profusion. The libraries, the forts, the light-houses and life-saving establishments—all employments and recreations on sea and land are at hand and available. It is not alone a sip of mineral water at a stated hour, or a plunge bath at regulated seasons, and—nothing else. Every hour, every minute, may have its different presentation of employment, and all consistent with some purpose in accordance with the visit of the individual.

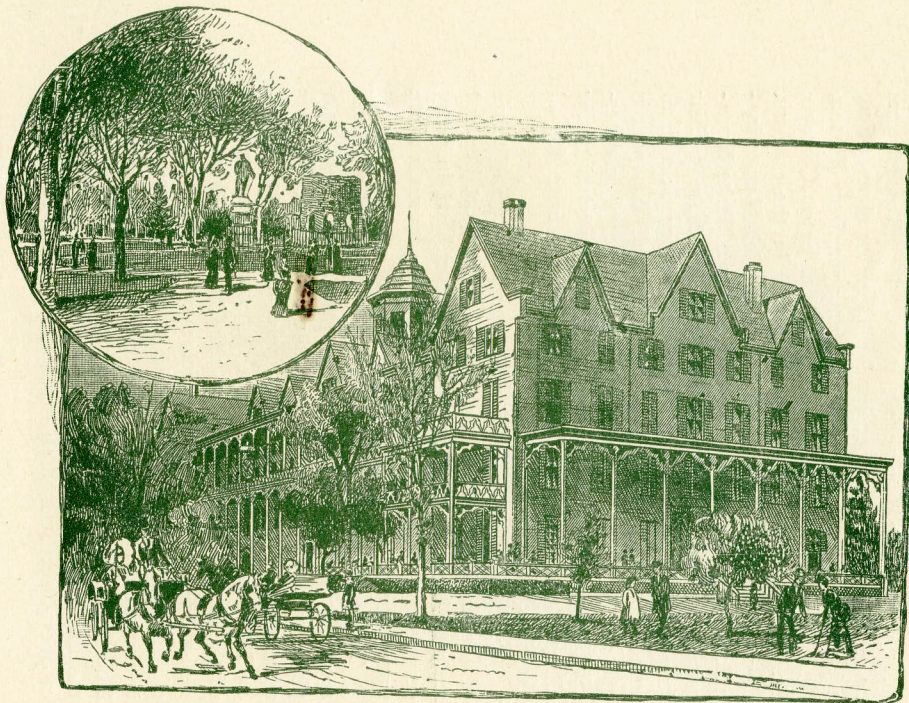
And here has been made the most ample provision for



the entertainment, during summer or winter (and especially during the summering season) for all sojourners or residents who may become for longer or shorter time a part of Newport's population. Every year from Boston, New York, Philadelphia, Baltimore, Washington, Chicago, St. Louis—every great city and centre in the country, there comes countless delegations to this island watering-place. Saratoga and the inland resorts, the White Mountains and the great caravansaries along shore, send their frequenters back and forth to this headquarters; and all summer long (and in spring and fall as well) Newport is gay and brilliant and desirable. Experienced in entertaining and with ample room and accommodations for all comers, the place welcomes all, and sets forth for all the choicest of her treasures.

On Bellevue Avenue, upon grounds adjoining those of the Casino, in the very centre of Newport life and activity, is the Ocean House, a first-class hotel in every respect, as indeed it must be to satisfy the demands made upon it by the situation.

The proprietors of the Ocean House would most respectfully call the attention of those about selecting a place in which to pass the summer to the superior advantages of this hotel as a summer home. Its location on Bellevue Avenue, the most fashionable thoroughfare of the city, its convenience to the Casino, its broad and well-shaded verandas, from which may be seen the throng of brilliant equipages during the afternoon drive, render it a most delightful and entertaining place of sojourn. This hotel has all the appointments and surroundings that are certain to please the taste and insure the comfort of guests accustomed to luxurious homes. The rooms.

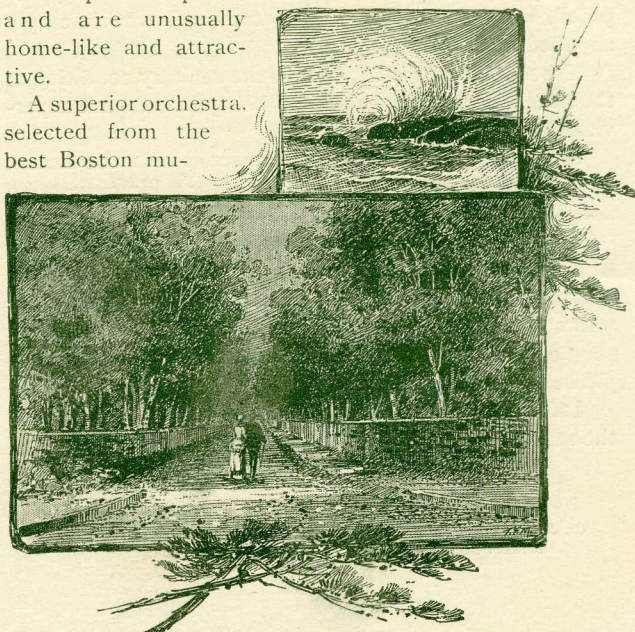


1. TOURO PARK.

2. OCEAN HOUSE.

en suite or single, are large, well ventilated and handsomely furnished, the best of beds being a special feature. The corridors and halls are lofty and spacious, five broad staircases extending to the upper stories, while an hydraulic elevator renders the house as comfortable as the best of city hotels. The parlor, of magnificent proportions, the reception-rooms and the broad alcove, with its quaint, old-fashioned chimney, all open on the piazzas; have open fire-places and are unusually home-like and attractive.

A superior orchestra, selected from the best Boston mu-



1. COGGESHALL LEDGE.

2. LOVER'S LANE.

sicians, under the leadership of Prof. C. N. Allen, gives daily three concerts in the open air, corridor or parlor.

The dining-room, large and cool, is entirely separated from the kitchen. The "cuisine" will in the future, as in the past, be under the management of a chef of acknowledged reputation, maintaining the high standard which has gained for this hotel so wide a reputation for superior excellence.

Only pure filtered rain-water is used for drinking purposes, while for bathing, etc., etc., the house is amply supplied from the city.

Especial attention is given to the sanitary condition of the hotel, a competent engineer being in constant supervision.

A fully equipped livery is connected with the house, while ample arrangements are made for taking guests to and from the bathing beach.

The proprietors give constant and personal attention to the comfort and welfare of their guests, and consider that an experience of forty-three years, in meeting the wants and tastes of a host of the most distinguished people of this country and Europe, will enable them to please the most fastidious.

Information may be obtained and rooms engaged for the season by application to the proprietors,

J. G. WEAVER & SON,

Or, J. G. WEAVER, Jr., & CO.,
EVERETT HOUSE, N. Y.

NEWPORT, R. I.

HOW TO REACH NEWPORT, R. I.

FROM BOSTON.

Via Old Colony Railroad.

Via Boston & Providence Railroad, and the Continental Steamboat Co.'s Steamers.

Via New York, Providence & Boston Railroad, and the Newport & Wickford R.R. and Steamboat Co.'s Steamer "Eolus."

FROM NEW YORK.

Via Old Colony Steamboat Co.'s Steamers, "Pilgrim," "Bristol" and "Providence" (Fall River Line), from Pier 28, North River, N. Y.

Via New York, New Haven & Hartford Railroad (from Grand Central Depot), and in connection with Newport & Wickford R.R. and Steamboat Co.'s Steamer "Eolus."

EVERETT HOUSE

Union Square

(OVERLOOKING THE PARK),

NEW YORK.



JOHN G. WEAVER, Jr., & CO.,

- Proprietors.

