

RESULTS & RECOMMENDATIONS

In reviewing the results and recommendations, the reader will find useful the specifications and definitions detailed on page 3 above. We used the following categories to organize the results and recommendations, which are displayed in tables:

- **Results**
 - Stand Dynamics – This characterizes the subject trees according to
 - Condition Class
 - Age Class
 - Tree Groupings
 - Tree Species Identified
 - Tree Size per DBH
 - Estimated Value
 - Conditions or Defects Observed
- **Recommendations**
 - Further Evaluation and Removal
 - Pruning and Structural Support Systems by ISA Risk Rating and Priority
 - Lightning Protection Systems
 - Soil Management
 - Pest Management
- **Entire Inventory**

Due to the length and detail of this table, we placed it last, under a major heading, for handy reference.

Where appropriate, we have included explanations, photos, drawings, or other information to illuminate the table contents.

Stand Dynamics

Condition Class

The breakdown of tree condition follows. We have color coded each class to correspond with condition-class colors represented in the maps.

Table 5: CONDITION CLASS BREAKDOWN

Condition Class	Quantity	% of Total
Good	970	81%
Fair	182	15%
Poor	33	3%
Dead	9	1%

Age Class

The breakdown of tree age class follows:

Table 6: AGE CLASS BREAKDOWN

Age Class	Quantity	% of Total
Over-mature	1	< 1%
Mature	516	43%
Semi-mature	570	47%
Young	106	9%
New Planting	1	< 1%

Tree Groupings

The following table displays trees that we recorded as groupings:

Table 7: TREES RECORDED AS GROUPINGS

Tag #	Common Name	Planting Type
16	western redcedar	8
17	western redcedar	9
20	Japanese flowering crabapple	2
27	Japanese maple	16
53	serviceberry	3
60	serviceberry	3
71	Leyland cypress	2
118	saucer magnolia	3
204	yew species	12
209	yew species	2
225	Leyland cypress	3
230	hawthorn species	4
245	Kousa dogwood	2
246	Sawara falsecypress	26
266	eastern redcedar	2
270	paper birch	3
300	Norway maple	5
316	yew species	4
317	Hinoki falsecypress	10
354	western redcedar	3
362	horsechestnut	3
386	Leyland cypress	16
407	European beech	7
408	European beech	5

Tag #	Common Name	Planting Type
426	sycamore maple	4
457	Kousa dogwood	2
513	eastern redcedar	2
517	arborvitae	6
524	western redcedar	5
525	western redcedar	3
526	western redcedar	5
527	western redcedar	5
528	western redcedar	5
554	viburnum species	4
584	Leyland cypress	4
605	Japanese umbrella-pine	3
606	Japanese umbrella-pine	3
607	Japanese cryptomeria	3
642	Chinese elm	8
643	Chinese elm	8
644	Chinese elm	6
645	Chinese elm	6
646	Chinese elm	6
647	Chinese elm	6
653	sweetgum	10
676	Nootka falsecypress	2
680	Nootka falsecypress	2
690	yew species	2
696	yew species	12

Tag #	Common Name	Planting Type
717	English holly	2
718	English holly	2
719	English holly	2
774	Leyland cypress	2
876	yew species	2
956	Colorado spruce	4
989	Hinoki falsecypress	3
1040	Norway maple	2
1041	green ash	3

Tag #	Common Name	Planting Type
1063	yew species	6
1064	Sawara falsecypress	12
1104	honeylocust	3
1120	Nootka falsecypress	2
1129	yaupon	4
1165	yaupon	5
1170	Sawara falsecypress	7
1189	Sawara falsecypress	4
1190	arborvitae	3

Tree Species Identified

Our inventory revealed 99 different species of trees, as detailed in the following table:

Table 8: TREE SPECIES IDENTIFIED

Genus	Species	Common Name	Count	% Distribution Total
Abies	balsamea	balsam fir	1	0.08
	concolor	white fir	1	0.08
	grandis	grand fir	1	0.08
Abies Total			3	0.25
Acer	japonicum	fullmoon maple	3	0.25
	palmatum	Japanese maple	41	3.43
	platanoides	Norway maple	85	7.12
	platanoides 'Crimson King'	'Crimson King' Norway maple	17	1.42
	pseudoplatanus	sycamore maple	52	4.36
	rubrum	red maple	7	0.59
	saccharinum	silver maple	5	0.42
	saccharum	sugar maple	6	0.50
	x freemanii	Freeman maple	2	0.17
Acer Total			218	18.25
Aesculus	hippocastanum	horsechestnut	18	1.51
Amelanchier	arborea	serviceberry	2	0.17
Betula	alleghaniensis	yellow birch	1	0.08
	lenta	sweet birch	2	0.17
	nigra	river birch	4	0.34
	papyrifera	paper birch	2	0.17
	pendula	European white birch	5	0.42
Betula Total			14	1.17
Carpinus	betulus	European hornbeam	29	2.43
Cedrus	atlantica	Atlas cedar	9	0.75
	libani	Cedar of Lebanon	5	0.42
Cedrus Total			14	1.17
Cercidiphyllum	japonicum	katsuratree	5	0.42
Cercis	canadensis	eastern redbud	1	0.08
Chamaecyparis	nootkatensis	Nootka falsecypress	42	3.52
	obtusa	Hinoki falsecypress	8	0.67
	pisifera	Sawara falsecypress	23	1.93
	thyoides	Atlantic whitecedar	3	0.25
Chamaecyparis Total			76	6.37
Cornus	controversa	giant dogwood	1	0.08
	florida	flowering dogwood	7	0.59
	kousa	Kousa dogwood	37	3.10

Genus	Species	Common Name	Count	% Distribution Total
	mas	Cornelian cherry dogwood	6	0.50
Cornus Total			51	4.27
Crataegus	spp.	hawthorn species	5	0.42
Cryptomeria	japonica	Japanese cryptomeria	9	0.75
Cupressus	arizonica	Arizona cypress	1	0.08
Fagus	grandifolia	American beech	3	0.25
	sylvatica	European beech	183	15.33
Fagus Total			186	15.58
Fraxinus	pennsylvanica	green ash	29	2.43
Ginkgo	biloba	Ginkgo	20	1.68
Gleditsia	triacanthos	honeylocust	8	0.67
Ilex	aquifolium	English holly	13	1.09
	vomitaria	yaupon	3	0.25
Ilex Total			16	1.34
Juniperus	virginiana	eastern redcedar	5	0.42
Laburnum	anagyroides	golden chain-tree	4	0.34
Leitneria	floridana	corkwood	1	0.08
Liquidambar	styraciflua	sweetgum	9	0.75
Liriodendron	tulipifera	tuliptree	9	0.75
Magnolia	acuminata	cucumber tree magnolia	1	0.08
	stellata	star magnolia	2	0.17
	x soulangiana	saucer magnolia	12	1.01
Magnolia Total			15	1.26
Malus	floribunda	Japanese flowering crabapple	17	1.42
	sylvestris	apple	1	0.08
Malus Total			18	1.51
Metasequoia	glyptostroboides	dawn redwood	5	0.42
Nyssa	sylvatica	black gum	1	0.08
Oxydendrum	arboreum	sourwood	1	0.08
Phellodendron	amurense	Amur cork tree	1	0.08
Picea	abies	Norway spruce	15	1.26
	glauca	white spruce	4	0.34
	glauca 'Conica'	dwarf Alberta spruce	2	0.17
	orientalis	Oriental spruce	13	1.09
	pungens	Colorado spruce	10	0.84
Picea Total			44	3.69
Pinus	nigra	Austrian pine	8	0.67
	parviflora	Japanese white pine	2	0.17
	strobus	eastern white pine	11	0.92
Pinus Total			21	1.76
Platanus	x acerifolia	London planetree	19	1.59
Populus	deltoides	eastern cottonwood	1	0.08

Genus	Species	Common Name	Count	% Distribution Total
Prunus	serotina	black cherry	2	0.17
	serrulata	Japanese flowering cherry	38	3.18
	subhirtella	Higan cherry	1	0.08
Prunus Total			41	3.43
Pseudotsuga	menziesii	douglasfir	2	0.17
Pyrus	calleryana	callery pear	28	2.35
Quercus	acutissima	sawtooth oak	16	1.34
	cerris	Turkey oak	9	0.75
	palustris	pin oak	3	0.25
	robur	English oak	28	2.35
	rubra	northern red oak	1	0.08
Quercus Total			57	4.77
Salix	alba	white willow	5	0.42
	matsudana	corkscrew willow	1	0.08
Salix Total			6	0.50
Sciadopitys	verticillata	Japanese umbrella-pine	9	0.75
Styrax	japonicus	Japanese snowbell	3	0.25
Syringa	meyeri	Meyer lilac	2	0.17
	reticulata	Japanese tree lilac	1	0.08
Syringa Total			3	0.25
Taxodium	ascendens	pond cypress	2	0.17
Taxus	spp.	yew species	21	1.76
Thuja	occidentalis	arborvitae	8	0.67
	plicata	western redcedar	47	3.94
Thuja Total			55	4.61
Tilia	americana	basswood	2	0.17
	cordata	littleleaf linden	55	4.61
	tomentosa	silver linden	1	0.08
Tilia Total			58	4.86
Tsuga	canadensis	eastern hemlock	3	0.25
Ulmus	americana	hybrid american elm	1	0.08
	parvifolia	Chinese elm	10	0.84
	procera	English elm	1	0.08
	pumila	Siberian elm	1	0.08
	rubra	slippery elm	20	1.68
Ulmus Total			33	2.76
Viburnum	spp.	viburnum species	1	0.08
x Cupressocyparis	leylandii	Leyland cypress	10	0.84
Zelkova	serrata	Japanese zelkova	3	0.25
Grand Total			1194	100.00

Table 9: LIST OF DEDICATED AND MEMORIAL TREES AT SALVE REGINA UNIVERSITY

Tag #	Common Name	Dedication Description
985	'Crimson King' Norway maple	In Loving Memory of John Fuvat III Our Classmate and Friend Class of 1993
983	Kousa dogwood	Salve Remembers 9/11/2001
1012	Kousa dogwood	Live-Laugh-Love Daniel Patrick Fennessy Class of 1999 "Peace"
997	tuliptree	In Loving Memory of Nicholas V. Kelly Class of '05 Peace
320	saucer magnolia	In Memory of Mary Elizabeth Butler April 8, 1967 to April 12, 2007 A devoted member of the Salve Regina community from 2001-2007
564	sourwood	Commemorate the eleven years of academic relationship between Appalachian State University and Salve Regina University, June 1992
1062	Japanese flowering cherry	A Gift From The Class of 1990
986	Siberian elm	In Loving Memory of a Teacher and Scholar Michael J. Mahoney, PHD. from faculty and students of the Holistic Counseling Program 2006

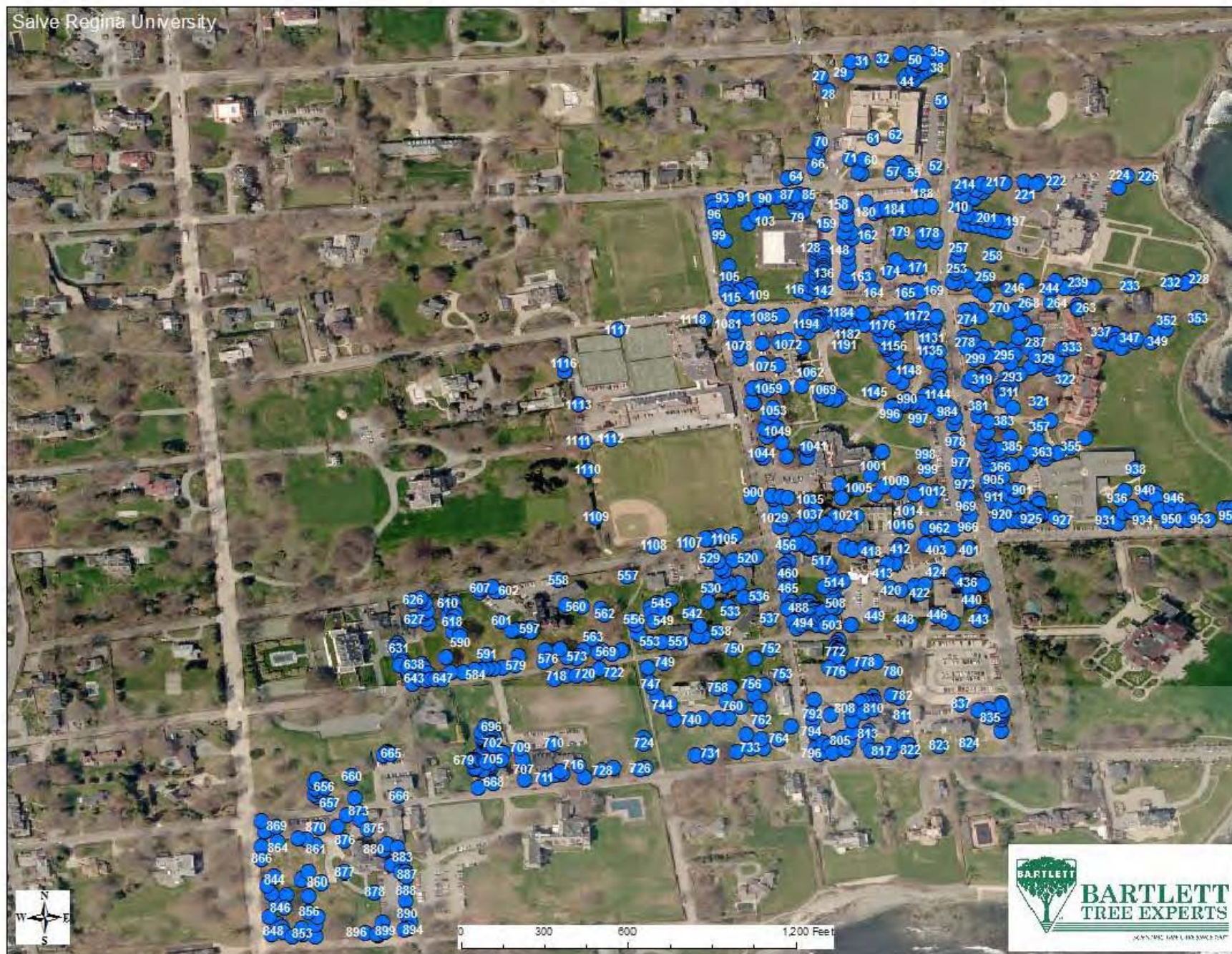
Several trees were denoted in the inventory as being specimens and/or important to the landscape and are listed in Table 10. These were denoted because of good condition, age, size, species, and/or importance to the overall landscape.

Table 10: TREES SUGGESTED AS FEATURE TREES

Tag #	Common Name	DBH	Condition	Age Class	Height Class	Canopy Radius
15	Oriental spruce	20	good	mature	large >40	15
28	European beech	78	good	mature	large >40	40
32	European beech	44	good	mature	large >40	25
179	European beech	44	good	mature	large >40	30
221	European beech	66	good	mature	large >40	50
258	littleleaf linden	30	good	mature	large >40	25
287	European hornbeam	27	good	mature	large >40	25
321	European beech	77	good	mature	large >40	45
404	European beech	63	good	mature	large >40	35
413	sweetgum	33	good	mature	large >40	35
414	Ginkgo	39	fair	mature	large >40	30
421	European beech	3	good	young	small <15	8
443	European beech	44	good	mature	large >40	40
455	Atlantic whitecedar	2	good	semi-mature	small <15	6
462	Japanese maple	13	good	mature	medium 15-40	30
532	Japanese maple	9	good	mature	medium 15-40	30
554	viburnum species	7	good	mature	medium 15-40	15
557	European beech	52	good	mature	large >40	35
561	European beech	74	good	mature	large >40	35

Tag #	Common Name	DBH	Condition	Age Class	Height Class	Canopy Radius
562	European beech	91	fair	mature	large >40	35
574	European beech	40	good	mature	large >40	40
587	European beech	45	good	mature	large >40	35
588	horsechestnut	39	good	mature	large >40	30
589	European beech	36	fair	mature	large >40	35
590	European beech	40	poor	mature	large >40	35
591	European beech	41	good	mature	large >40	35
602	European beech	36	good	mature	large >40	35
657	European hornbeam	40	good	mature	large >40	35
658	European beech	67	good	mature	large >40	35
707	European beech	38	fair	mature	large >40	30
708	European beech	44	good	mature	large >40	40
730	European beech	55	fair	mature	large >40	35
731	littleleaf linden	60	good	mature	large >40	35
749	littleleaf linden	49	good	mature	large >40	35
775	European beech	50	good	mature	large >40	35
836	European beech	50	good	mature	large >40	35
840	Ginkgo	24	good	mature	large >40	25
841	littleleaf linden	70	good	mature	large >40	40
843	dawn redwood	18	good	semi-mature	large >40	15
848	Turkey oak	39	good	mature	large >40	40
867	Turkey oak	50	good	mature	large >40	40
1009	European beech	83	good	mature	large >40	45
1010	littleleaf linden	69	fair	mature	large >40	40
1075	European beech	54	good	mature	large >40	25
1088	London planetree	72	fair	mature	large >40	45
1160	European beech	37	good	mature	large >40	35

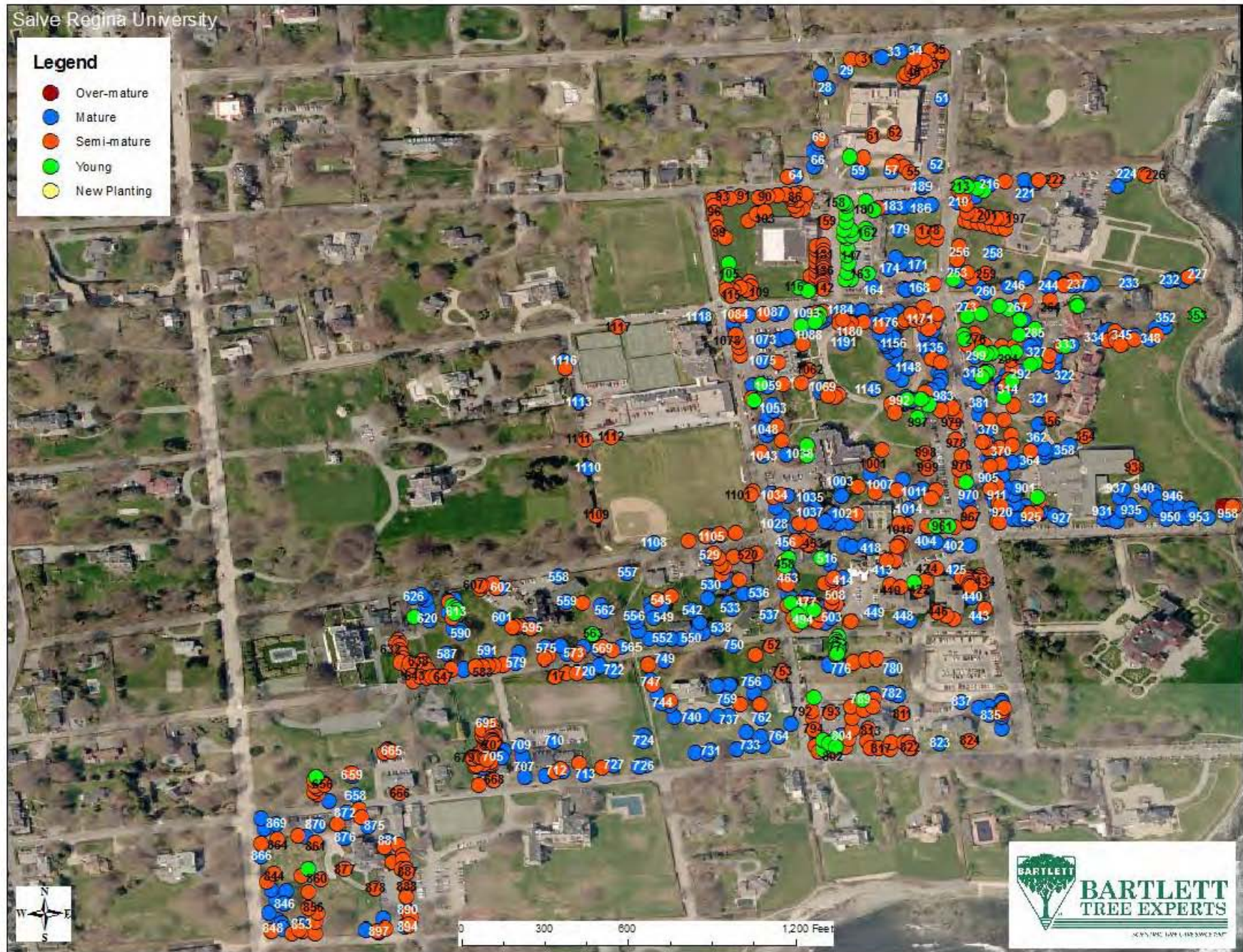
Map 1: 2012 TREE INVENTORY



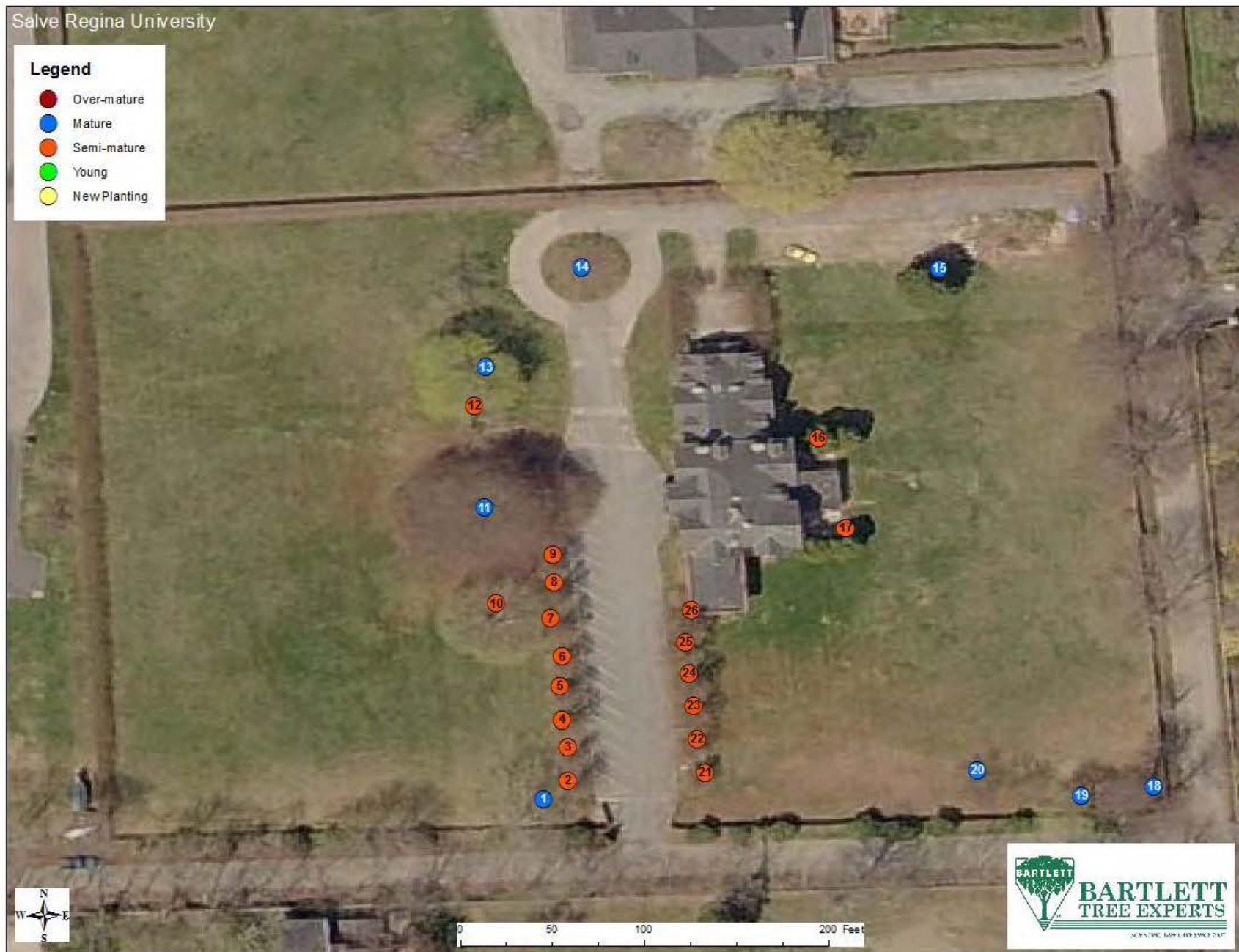
Map 2: 2012 TREE INVENTORY (GAMMEL ROAD DORMATORIES)



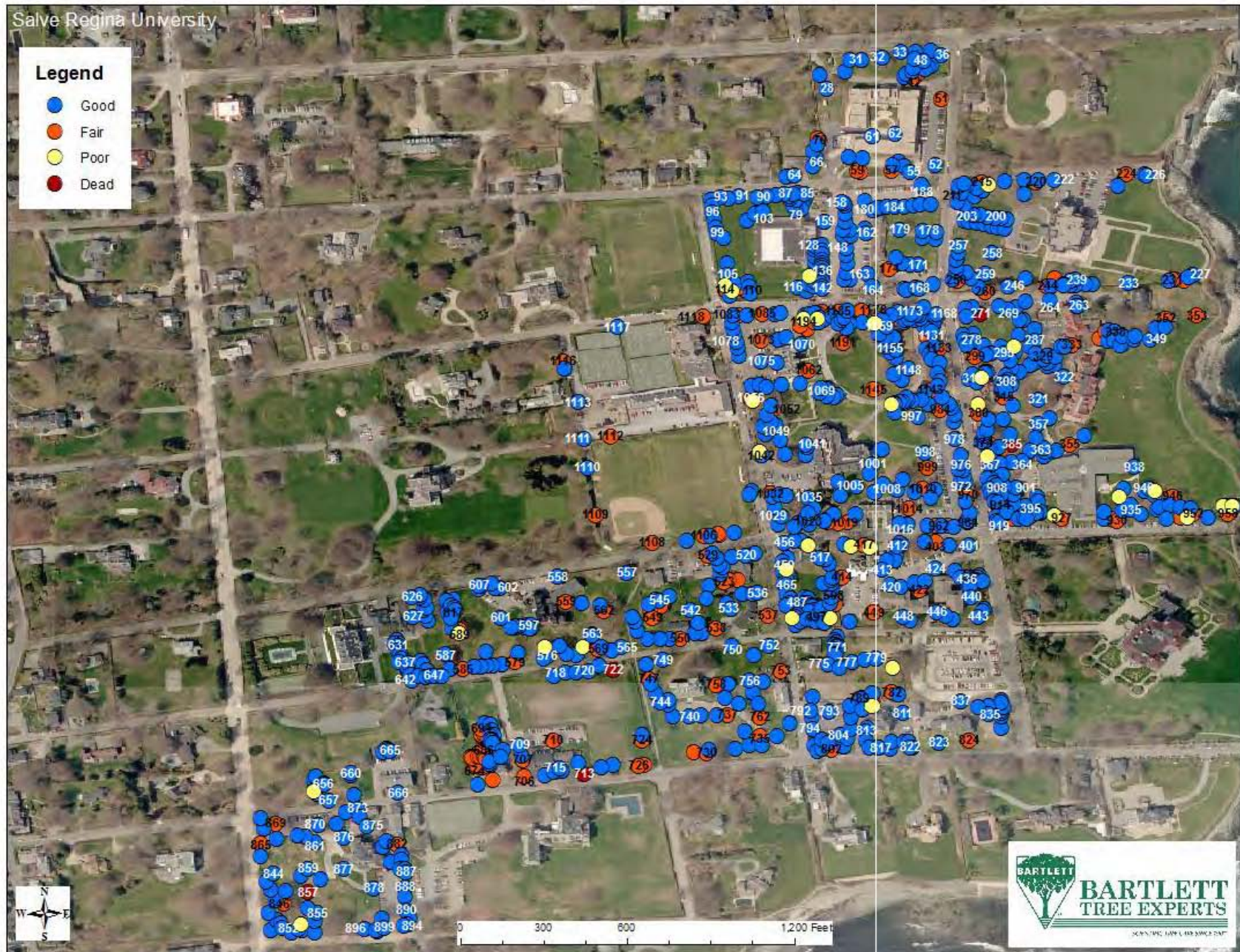
Map 3: TREES BY AGE CLASS



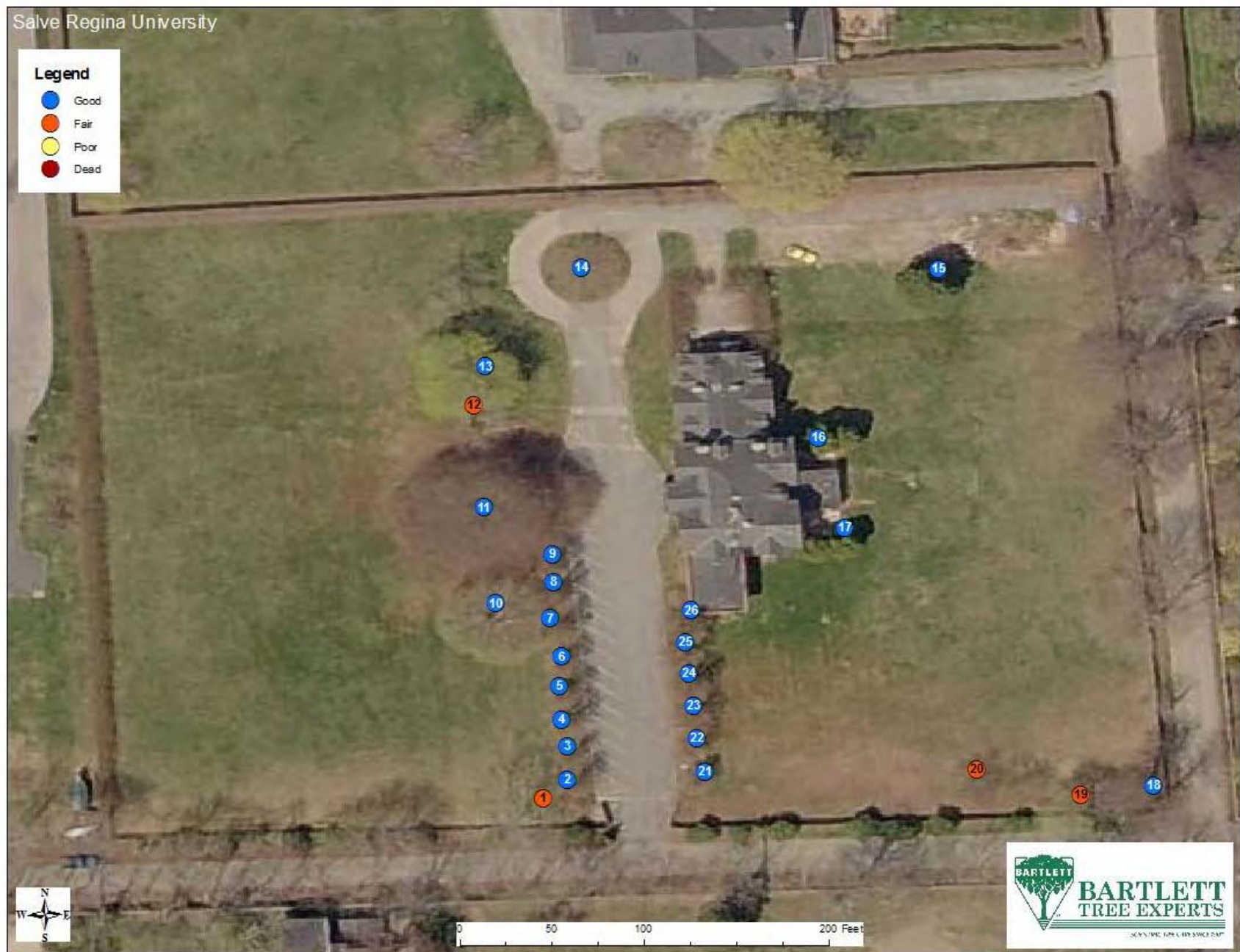
Map 4: TREES BY AGE CLASS (GAMMEL ROAD DORMATORIES)



Map 5: TREES BY CONDITION CLASS



Map 6: TREES BY CONDITION CLASS (GAMMEL ROAD DORMATORIES)



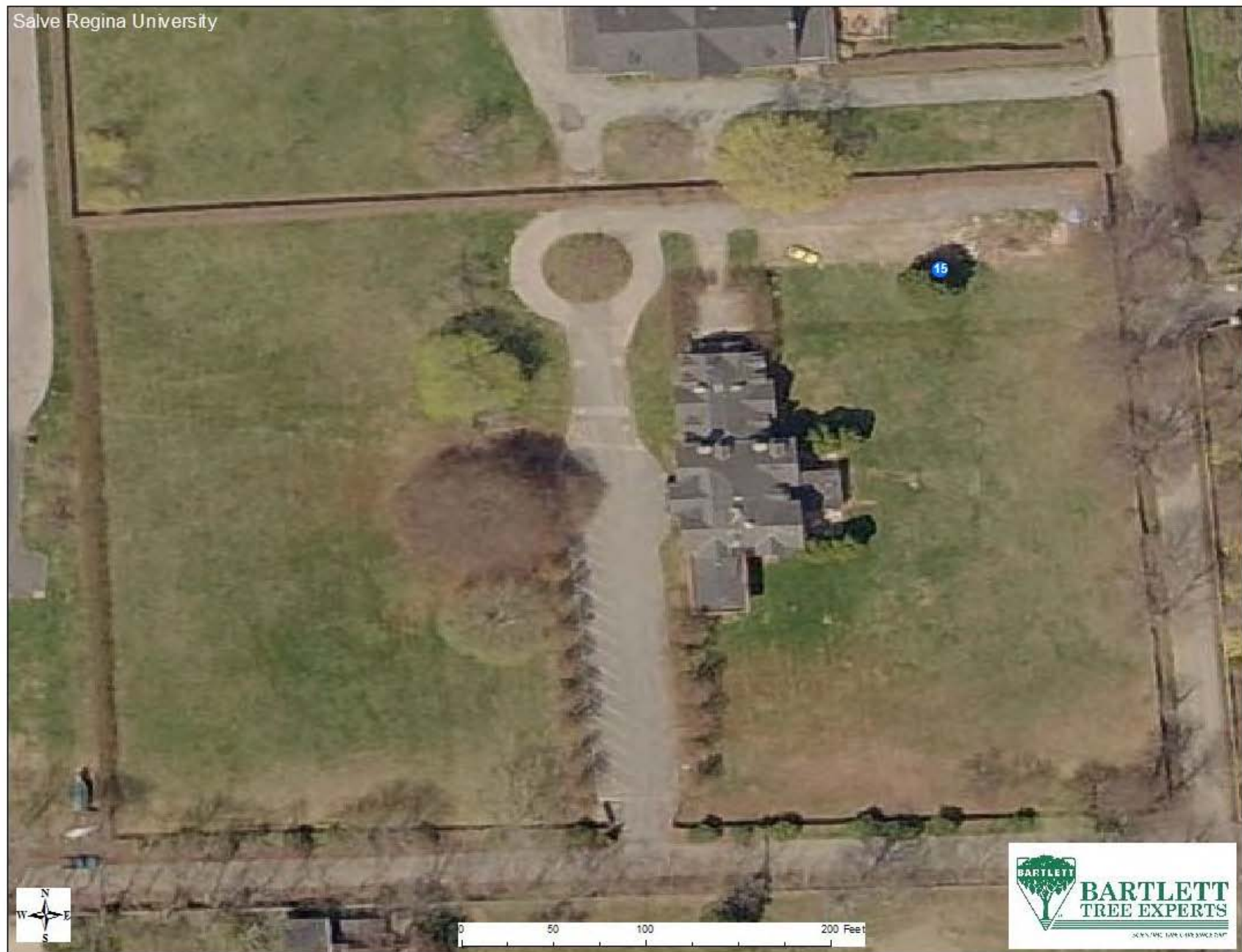
Map 7: DEDICATED AND MEMORIAL TREES



Map 8: FEATURE TREES



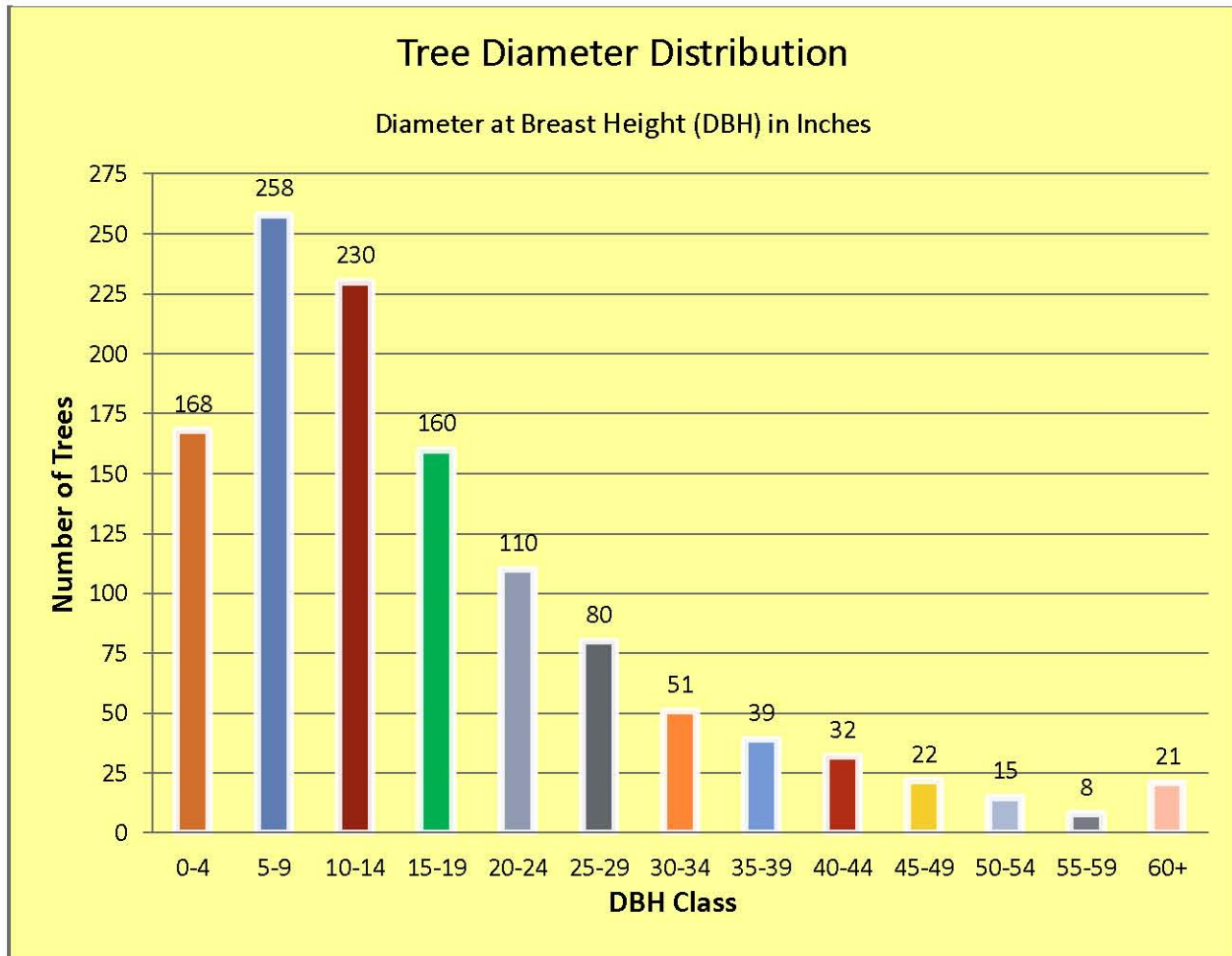
Map 9: FEATURE TREES (GAMMEL ROAD DORMATORIES)



Tree Size (DBH)

The following chart illustrates numbers of trees according to size per DBH:

Table 11: TREE SIZE ACCORDING TO DBH



Estimated Value

As part of the Bartlett inventory process, we have included an estimated value for each tree and a cumulative total for all trees inventoried. To calculate the estimated value, we use a modified version¹ of the Trunk Formula Method published by the Council of Tree and Landscape Appraisers in *The Guide for Plant Appraisal*, 9th Edition.

¹ This version does not consider cost of purchase and installation of the largest available “like tree.”

The following data fields are used in this formula:

Table 12: DATA FIELDS FOR DETERMINING ESTIMATED TREE VALUE

Estimated Value	Size, species factor, condition factor, and location value
Size	Based on tree DBH (4.5 feet above grade)
Species Factor	Relative species desirability based on 100% for the tree in that geographical location. In most cases, species desirability ratings, published by the International Society of Arboriculture, are used for adjustment.
Condition Factor	Rating of the tree's structure and health based on 100%
Location Factor	Average rating for the site and the tree's contribution and placement, based on 100%

² Estimated cumulative total value is actually greater due to not taking into account individual trees within tree groupings.

Salve Regina Beech Trees

The beech (*Fagus*) tree population on campus (186 trees; 16% of the total tree population) is very important to the campus and the landscape in general. Beech trees are among the most stately and highly prized landscape trees because of their habit and size. European beech (*Fagus sylvatica*) is also highly prized for their cultivars with red, purple, variegated, and cut-leaf foliage. Beech trees are also host to a variety of pests and diseases and it is very important to maintain their health to avoid these situations. The following table lists beech trees that were recommended for Bartlett's Root Invigoration program to either try and improve or maintain the health of the tree. Please consult the technical report at the end of this management plan for more details on beech trees.

Table 14: BEECH TREES RECOMMENDED FOR ROOT INVIGORATION

Tag #	Common Name	DBH	Condition	Canopy Radius
28	European beech	78	good	40
51	European beech	31	fair	30
119	European beech	13	poor	10
210	European beech	36	good	20
214	European beech	56	good	35
221	European beech	66	good	50
329	European beech	17	fair	15
330	European beech	28	good	30
333	European beech	45	fair	30
380	European beech	71	fair	25
447	European beech	52	good	35
557	European beech	52	good	35
562	European beech	91	fair	35
578	European beech	71	good	35
589	European beech	36	fair	35
590	European beech	40	poor	35
602	European beech	36	good	35
625	European beech	41	good	40
658	European beech	67	good	35
706	European beech	40	fair	35
707	European beech	38	fair	30
730	European beech	55	fair	35
801	European beech	2	fair	6
802	European beech	7	fair	10
836	European beech	50	good	35
869	European beech	58	fair	35
970	European beech	48	fair	25
1009	European beech	83	good	45
1019	European beech	31	fair	25
1046	European beech	37	good	25
1073	European beech	47	fair	25
1140	European beech	36	fair	40

Tag #	Common Name	DBH	Condition	Canopy Radius
1145	European beech	18	fair	30
1161	European beech	36	fair	35
1178	European beech	46	fair	40
1185	European beech	47	fair	25
1191	European beech	67	fair	35

Map 11: SALVE REGINA BEECH TREES RECOMMENDED FOR ROOT INVIGORATION



Conditions or Defects Observed

Finally, in this (results) section, we list in Table 15 trees on which we observed conditions, defects, or other structural issues. Figure 1 provides an example of a tree with a wound on the stem.



Figure 1: Tree #726 exhibiting a cavity in the stem.

Table 15: LIST OF TREES WITH CONDITIONS, DEFECTS, OR OTHER STRUCTURAL ISSUES

Tag #	Common Name	DBH	Condition or Defect	Condition or Defect	Condition or Defect	Condition or Defect	Condition or Defect	Condition or Defect	Condition or Defect
1	Norway maple	27	wound-stem	wound-branch
10	Norway maple	31	wound-stem	wound-branch	codominant leaders	included bark
11	European beech	60	wound-stem
12	sycamore maple	12	wound-stem
13	Norway maple	30	wound-branch	cavity-branch	wound-stem
28	European beech	78	fungi/conks	cavity-stem	wound-stem
29	English oak	34	lightning damage	wound-branch
30	red maple	12	codominant leaders
32	European beech	44	cavity-root flare
33	tuliptree	54	deadwood >2	wound-stem
34	Sawara cypress	19	codominant leaders
35	Freeman maple	15	codominant leaders
36	Freeman maple	16	codominant leaders
37	Ginkgo	16	codominant leaders
40	Ginkgo	17	codominant leaders
41	Ginkgo	22	codominant leaders	wound-stem	wound-root flare
42	Ginkgo	29	codominant leaders	wound-stem

Tag #	Common Name	DBH	Condition or Defect	Condition or Defect	Condition or Defect	Condition or Defect	Condition or Defect	Condition or Defect	Condition or Defect
43	Ginkgo	18	codominant leaders
44	Ginkgo	26	codominant leaders
45	Ginkgo	17	codominant leaders	wound-stem
46	Ginkgo	16	codominant leaders
47	Ginkgo	17	codominant leaders
50	Ginkgo	22	wound-stem	uneven crown
51	European beech	31	deadwood >2	codominant leaders	20% dieback
54	river birch	8	codominant stems
58	London planetree	48	crack	cavity-stem
59	sycamore maple	24	cavity-branch	cavity-stem
65	horsechestnut	31	cavity-stem	codominant leaders
66	horsechestnut	24	cavity-stem
67	horsechestnut	21	wound-stem	cavity-stem
68	horsechestnut	26	cavity-stem	cavity-branch
69	horsechestnut	26	cavity-stem	cavity-branch	deadwood >2
76	Leyland cypress	7	codominant stems
83	Leyland cypress	9	codominant leaders	planting material
84	Leyland cypress	6	codominant leaders	planting material

Tag #	Common Name	DBH	Condition or Defect	Condition or Defect	Condition or Defect	Condition or Defect	Condition or Defect	Condition or Defect	Condition or Defect
85	sawtooth oak	10	codominant leaders
87	sawtooth oak	9	codominant leaders
88	sawtooth oak	8	codominant leaders
90	sawtooth oak	9	codominant leaders
92	sawtooth oak	10	codominant leaders
93	sawtooth oak	10	codominant leaders	girdling roots suspe
94	sawtooth oak	10	codominant leaders
95	sawtooth oak	9	codominant leaders
96	sawtooth oak	8	codominant leaders
97	sawtooth oak	9	codominant leaders
101	European beech	12	planting material	codominant leaders
102	European beech	12	codominant leaders
103	European beech	11	codominant leaders
105	sugar maple	7	codominant leaders
106	sugar maple	10	codominant leaders

Tag #	Common Name	DBH	Condition or Defect	Condition or Defect	Condition or Defect	Condition or Defect	Condition or Defect	Condition or Defect	Condition or Defect
107	sugar maple	10	codominant leaders
116	sugar maple	5	codominant leaders	wound-stem
117	sugar maple	8	codominant leaders
119	European beech	13	deadwood >2
129	European hornbeam	5	wound-stem
136	European hornbeam	3	wound-root flare
148	green ash	5	codominant leaders
149	green ash	5	codominant leaders
150	green ash	6	codominant leaders
151	green ash	5	codominant leaders
152	green ash	7	codominant leaders
153	green ash	6	codominant leaders
154	green ash	6	codominant leaders
155	green ash	8	codominant leaders	butt swelling
157	green ash	8	codominant leaders
158	green ash	6	codominant leaders

Tag #	Common Name	DBH	Condition or Defect	Condition or Defect	Condition or Defect	Condition or Defect	Condition or Defect	Condition or Defect	Condition or Defect
164	horsechestnut	33	cavity-stem	cavity-branch
165	Japanese maple	13	deadwood >2	cavity-stem
166	Japanese maple	11	cavity-stem	cavity-branch	codominant stems
167	Japanese maple	12	cavity-stem
168	Japanese maple	15	cavity-stem	deadwood >2	codominant stems
171	Japanese flowering cherry	24	wound-stem
172	Japanese flowering cherry	25	wound-stem
173	Japanese flowering cherry	26	wound-stem
174	London planetree	49	wound-stem
178	Ginkgo	19	wound-root flare
179	European beech	44	codominant leaders
183	Japanese flowering cherry	25	cavity-stem
187	Japanese flowering cherry	26	cavity-stem	crack	wound-stem
188	silver linden	44	codominant leaders	included bark
189	littleleaf linden	26	seam
191	callery pear	10	girdling roots suspe
193	callery pear	12	girdling roots suspe

Tag #	Common Name	DBH	Condition or Defect	Condition or Defect	Condition or Defect	Condition or Defect	Condition or Defect	Condition or Defect	Condition or Defect
194	callery pear	10	girdling roots suspe
195	callery pear	11	girdling roots suspe
199	callery pear	12	wound-root flare
206	red maple	6	codominant leaders
208	Norway maple	6	uneven crown
210	European beech	36	deadwood >2	codominant leaders	cavity-branch	wound-stem (6'x2')	10% dieback
212	littleleaf linden	21	codominant leaders	Remove 2 suckers
213	European beech	10	codominant leaders
214	European beech	56	codominant leaders	cavity-stem	wound-stem (3'x3')	wound-branch	5% dieback
215	sycamore maple	19	cavity-stem
216	European beech	47	cavity-stem	cavity-branch
220	green ash	29	cavity-stem	wound-stem	codominant leaders
221	European beech	66	wound-stem	5% dieback
224	hawthorn species	9	cavity-stem
227	horsechestnut	27	cavity-stem	cavity-branch	codominant leaders
229	sycamore maple	32	cavity-stem	cavity-branch
230	hawthorn species	8	wound-stem
231	sycamore maple	23	cavity-stem

Tag #	Common Name	DBH	Condition or Defect	Condition or Defect	Condition or Defect	Condition or Defect	Condition or Defect	Condition or Defect	Condition or Defect
232	sycamore maple	23	cavity-stem	cavity-branch	codominant leaders
233	sycamore maple	31	cavity-stem	cavity-branch	codominant leaders
234	sycamore maple	17	cavity-stem	codominant leaders
235	sycamore maple	35	cavity-stem	cavity-branch	deadwood >2
236	sycamore maple	22	cavity-stem	cavity-branch	wound-branch
237	sycamore maple	27	cavity-stem	cavity-branch	cavity-root flare
238	Austrian pine	7	wound-root flare
239	Austrian pine	5	wound-root flare
240	Austrian pine	8	lean
241	Austrian pine	6	lean	codominant leaders
242	sycamore maple	27	cavity-stem	wound-branch	wound-root flare
243	Norway maple	28	wound-stem	wound-branch	deadwood >2
244	sycamore maple	21	cavity-branch	cavity-stem
249	European beech	9	wound-stem
250	sycamore maple	37	cavity-stem	cavity-branch	deadwood >2	codominant leaders
252	sycamore maple	23	cavity-branch	wound-stem
253	sycamore maple	26	codominant leaders	wound-stem
255	European beech	14	codominant leaders

Tag #	Common Name	DBH	Condition or Defect	Condition or Defect	Condition or Defect	Condition or Defect	Condition or Defect	Condition or Defect	Condition or Defect
256	sycamore maple	46	codominant leaders	wound-stem
257	European beech	19	codominant leaders	included bark
258	littleleaf linden	30	codominant leaders
260	silver maple	36	cavity-stem	codominant leaders
265	littleleaf linden	20	butt swelling
267	Japanese maple	12	wound-root flare	cavity-stem
272	European beech	16	wound-stem
273	Japanese maple	18	codominant leaders
283	river birch	2	codominant leaders
285	Norway maple	27	codominant stems	included bark
287	European hornbeam	27	cavity-stem	wound-branch
288	'Crimson King' Norway maple	44	cavity-stem	cavity-branch	butt swelling
292	European beech	36	wound-branch
299	silver maple	27	codominant leaders	wound-stem
301	sycamore maple	31	cavity-stem	cavity-branch
306	European beech	19	wound-branch
307	European beech	20	codominant leaders
308	European beech	21	cavity-stem

Tag #	Common Name	DBH	Condition or Defect	Condition or Defect	Condition or Defect	Condition or Defect	Condition or Defect	Condition or Defect	Condition or Defect
309	European beech	26	codominant leaders
310	European beech	21	codominant leaders
311	European beech	23	wound-stem
314	European beech	31	codominant leaders
321	European beech	77	codominant leaders	cavity-stem	wound-stem
324	European beech	35	codominant leaders
325	Norway maple	8	codominant leaders
326	European beech	18	codominant leaders
327	European beech	34	codominant stems	included bark	wound-branch
328	European beech	28	wound-root flare
330	European beech	28	5% dieback
331	'Crimson King' Norway maple	12	codominant leaders
332	European beech	7	codominant leaders
333	European beech	45	cavity-branch	wound-stem (10'x3')	25% dieback
334	'Crimson King' Norway maple	21	deadwood >2	seam
335	sycamore maple	10	wound-stem
337	slippery elm	28	cavity-stem

Tag #	Common Name	DBH	Condition or Defect	Condition or Defect	Condition or Defect	Condition or Defect	Condition or Defect	Condition or Defect	Condition or Defect
338	slippery elm	14	codominant stems
340	sycamore maple	14	wound-stem	cavity-stem
341	sycamore maple	12	wound-stem	cavity-stem
342	sycamore maple	22	codominant leaders
343	sycamore maple	13	codominant stems	wound-stem	wound-branch
345	European beech	34	codominant leaders	wound-stem
346	sycamore maple	12	codominant leaders
347	sycamore maple	27	codominant leaders	wound-stem
349	sycamore maple	14	cavity-stem	cavity-stem
351	sycamore maple	15	codominant stems
352	slippery elm	25	cavity-stem	wound-stem
356	Norway spruce	15	codominant leaders
360	Japanese flowering cherry	7	codominant stems
361	Kousa dogwood	4	codominant stems
362	horsechestnut	32	cavity-stem	cavity-root flare	crack	codominant stems
363	European beech	21	codominant leaders	girdling roots prese
365	European beech	26	codominant leaders	cavity-stem

Tag #	Common Name	DBH	Condition or Defect	Condition or Defect	Condition or Defect	Condition or Defect	Condition or Defect	Condition or Defect	Condition or Defect
366	English oak	15	codominant leaders
368	Norway maple	19	cavity-stem
369	sugar maple	27	cavity-stem
370	'Crimson King' Norway maple	37	cavity-stem	cavity-branch	fungi/conks	wound-root flare
374	sycamore maple	22	cavity-stem	cavity-branch
377	European beech	32	wound-stem	wound-branch
379	European beech	21	cavity-stem
380	European beech	71	cavity-stem	cavity-root flare	codominant leaders	fungi/conks	cavity-branch
381	pin oak	34	cavity-stem	cavity-root flare	cavity-branch	poor branch structur
382	European beech	14	codominant leaders
384	European beech	18	codominant leaders
388	Japanese maple	10	cavity-stem
389	Japanese maple	14	codominant leaders	wound-root flare
392	fullmoon maple	4	cavity-root flare
393	pond cypress	18	codominant leaders	wound-stem
394	Japanese maple	7	cavity-stem
395	Japanese maple	5	cavity-stem
396	Japanese maple	16	codominant leaders
397	Japanese maple	12	codominant stems

Tag #	Common Name	DBH	Condition or Defect	Condition or Defect	Condition or Defect	Condition or Defect	Condition or Defect	Condition or Defect	Condition or Defect
398	Japanese maple	8	codominant stems	cavity-stem
400	Hinoki falsecypress	32	codominant leaders
403	sycamore maple	19	storm damage
404	European beech	63	wound-stem	fungi/conks
413	sweetgum	33	wound-stem	cavity-stem
415	littleleaf linden	23	codominant leaders
416	European beech	50	fungi/conks	wound-stem	75% dead bark
417	littleleaf linden	36	wound-stem	codominant leaders
418	Norway maple	29	cavity-stem	cavity-branch
425	littleleaf linden	46	codominant leaders
430	European beech	9	wound-root flare
431	European beech	9	wound-root flare
440	European beech	47	wound-root flare
443	European beech	44	cavity-stem	wound-stem
447	European beech	52	cavity-stem	wound-stem	30% dead bark	5% dieback
450	European beech	13	girdling roots suspe
460	Kousa dogwood	4	wound-root flare
472	Sawara falsecypress	23	codominant leaders

Tag #	Common Name	DBH	Condition or Defect	Condition or Defect	Condition or Defect	Condition or Defect	Condition or Defect	Condition or Defect	Condition or Defect
484	Sawara falsecypress	22	codominant leaders
494	littleleaf linden	40	crack	cavity-stem	codominant leaders
509	Norway spruce	9	codominant leaders
530	white willow	28	cavity-stem	codominant leaders
531	Japanese flowering cherry	11	codominant stems
545	white willow	19	cavity-root flare
546	white willow	30	wound-root flare
549	white willow	26	cavity-root flare	cavity-root
550	sycamore maple	24	wound-stem
551	'Crimson King' Norway maple	27	wound-root
552	Japanese flowering crabapple	10	wound-stem
557	European beech	52	cavity-stem	codominant leaders	20% dead bark
561	European beech	74	cavity-stem	wound-stem	codominant leaders
562	European beech	91	wound-stem	wound-root
572	Japanese cryptomeria	11	wound-root flare
573	Japanese flowering cherry	37	codominant leaders

Tag #	Common Name	DBH	Condition or Defect	Condition or Defect	Condition or Defect	Condition or Defect	Condition or Defect	Condition or Defect	Condition or Defect
574	European beech	40	wound-root
575	European beech	54	cavity-stem	deadwood >2
576	Norway maple	9	wound-root flare
577	Norway maple	9	wound-root flare
578	European beech	71	wound-stem	wound-root flare	30% dead bark	10% dieback
579	Norway maple	24	wound-stem	wound-root flare
582	Norway maple	9	wound-root flare
585	English oak	24	15% dieback
586	black cherry	9	wound-root flare	wound-root
588	horsechestnut	39	wound-branch	cavity-branch	cavity-stem
589	European beech	36	wound-stem	25% dead bark
601	Norway maple	23	wound-root flare
602	European beech	36	cavity-stem	wound-stem	15% dead bark
604	Japanese flowering cherry	8	girdling roots prese
605	Japanese umbrella-pine	9	girdling roots prese
606	Japanese umbrella-pine	9	girdling roots prese
607	Japanese cryptomeria	14	girdling roots prese

Tag #	Common Name	DBH	Condition or Defect	Condition or Defect	Condition or Defect	Condition or Defect	Condition or Defect	Condition or Defect	Condition or Defect
609	Norway spruce	9	codominant leaders
612	Japanese flowering cherry	18	wound-stem
613	Japanese flowering cherry	17	wound-stem
620	London planetree	29	cavity-stem
622	London planetree	30	cavity-stem
625	European beech	41	cavity-stem	10% dieback
657	European hornbeam	40	cavity-stem
658	European beech	67	cavity-stem	30% dead bark
705	Norway maple	22	wound-stem	codominant leaders
706	European beech	40	10% dieback
707	European beech	38	5% dieback
711	European beech	26	codominant leaders
722	English oak	24	hanger
723	white willow	32	deadwood >2
725	red maple	30	cavity-stem
726	red maple	49	cavity-stem	cavity-branch
730	European beech	55	30% dead bark
735	Norway maple	21	girdling roots prese
737	Japanese flowering cherry	11	girdling roots prese

Tag #	Common Name	DBH	Condition or Defect	Condition or Defect	Condition or Defect	Condition or Defect	Condition or Defect	Condition or Defect	Condition or Defect
738	Japanese flowering cherry	12	girdling roots suspe
739	Japanese flowering cherry	10	girdling roots suspe
740	Japanese flowering cherry	11	girdling roots suspe
741	Japanese flowering cherry	12	girdling roots suspe
745	Norway maple	30	codominant leaders
748	littleleaf linden	14	codominant leaders
751	littleleaf linden	16	codominant leaders
754	Norway maple	40	wound-stem	codominant leaders
755	littleleaf linden	55	codominant leaders
758	Norway maple	39	cavity-branch	codominant leaders
775	European beech	50	codominant leaders
776	European beech	53	codominant leaders
780	littleleaf linden	52	cavity-stem	codominant leaders
785	Norway maple	17	construction damage
786	Norway maple	19	construction damage	girdling roots suspe

Tag #	Common Name	DBH	Condition or Defect	Condition or Defect	Condition or Defect	Condition or Defect	Condition or Defect	Condition or Defect	Condition or Defect
788	littleleaf linden	15	construction damage
789	sycamore maple	17	construction damage	codominant stems
810	fullmoon maple	5	construction damage
811	Japanese zelkova	6	construction damage
821	littleleaf linden	8	wound-root flare
836	European beech	50	10% dieback
846	littleleaf linden	70	deadwood >2
867	Turkey oak	50	deadwood >2
868	European beech	43	wound-stem
869	European beech	58	wound-stem	codominant leaders	35% dead bark	10% dieback
870	littleleaf linden	53	cavity-stem
872	Norway maple	23	girdling roots prese
875	slippery elm	22	codominant leaders	cavity-stem
881	saucer magnolia	9	codominant leaders
894	Norway maple	43	deadwood >2
896	Norway maple	32	cavity-stem	codominant leaders
901	Hinoki falsecypress	25	codominant leaders
902	sycamore maple	20	wound-stem
903	Norway maple	36	codominant leaders	cavity-stem	wound-branch

Tag #	Common Name	DBH	Condition or Defect	Condition or Defect	Condition or Defect	Condition or Defect	Condition or Defect	Condition or Defect	Condition or Defect
904	giant dogwood	10	wound-stem	cavity-stem
906	'Crimson King' Norway maple	38	cavity-stem	cavity-branch	deadwood >2	codominant leaders	cavity-root flare
909	sycamore maple	28	cavity-stem	codominant leaders
912	Japanese maple	18	cavity-branch	codominant leaders
913	Japanese maple	6	cavity-stem
914	horsechestnut	4	cavity-stem
915	'Crimson King' Norway maple	34	cavity-branch	codominant leaders
916	slippery elm	29	deadwood >2	wound-stem	cavity-stem	wound-root
917	littleleaf linden	27	lean
918	Austrian pine	12	lean
919	Austrian pine	7	lean
920	Norway maple	33	codominant leaders	wound-stem	cavity-branch
921	horsechestnut	16	cavity-stem
922	horsechestnut	25	cavity-root flare	codominant leaders
923	horsechestnut	19	cavity-stem
925	horsechestnut	24	cavity-stem	cavity-branch
926	silver maple	45	cavity-root flare	cavity-stem	cavity-branch
927	basswood	24	wound-stem	cavity-stem
928	Norway maple	32	cavity-stem	wound-branch	wound-stem
929	Norway maple	17	cavity-stem	cavity-branch
930	Norway maple	29	cavity-stem	cavity-branch	deadwood >2

Tag #	Common Name	DBH	Condition or Defect	Condition or Defect	Condition or Defect	Condition or Defect	Condition or Defect	Condition or Defect	Condition or Defect
931	Norway maple	28	codominant leaders	included bark
932	Norway maple	33	cavity-stem	cavity-branch	deadwood >2
934	Norway maple	19	fungi/conks	cavity-stem
935	Norway maple	22	codominant leaders	wound-root
936	Norway maple	33	cavity-stem	cavity-branch	cavity-root flare
939	Norway maple	41	cavity-stem	wound-stem	cavity-branch	codominant leaders	wound-root flare
941	London planetree	27	cavity-stem	cavity-root flare
942	pin oak	22	deadwood >2	wound-root flare	cavity-stem
943	Turkey oak	39	wound-stem	wound-branch	codominant leaders	wound-root flare
944	Turkey oak	25	wound-stem
945	Turkey oak	29	wound-stem	deadwood >2
946	Norway maple	31	cavity-stem	deadwood >2	cavity-root flare
947	Norway maple	26	codominant leaders	wound-stem
948	sycamore maple	24	codominant leaders	wound-stem	wound-root flare
949	sycamore maple	22	cavity-branch	cavity-stem	cavity-root flare
950	Amur corktree	24	deadwood >2	wound-root flare	wound-root
951	London planetree	17	cavity-stem	cavity-branch

Tag #	Common Name	DBH	Condition or Defect	Condition or Defect	Condition or Defect	Condition or Defect	Condition or Defect	Condition or Defect	Condition or Defect
952	London planetree	25	cavity-stem	cavity-branch
953	green ash	23	codominant stems	cavity-stem
954	river birch	14	cavity-stem	cavity-root flare
955	Norway maple	21	cavity-root flare
958	sycamore maple	19	cavity-stem	cavity-root flare	cavity-branch
959	Norway maple	9	codominant leaders
960	red maple	5	codominant leaders	wound-stem
961	Norway maple	10	codominant leaders
962	red maple	6	codominant leaders
963	Norway maple	14	codominant leaders
964	eastern white pine	14	codominant leaders
965	eastern white pine	12	codominant leaders
966	douglasfir	16	codominant leaders
967	European beech	10	codominant leaders
969	Norway maple	30	codominant leaders	fungi/conks	cavity-stem	wound-branch
970	European beech	48	deadwood >2	cavity-stem	wound-stem	cavity-branch	5% dieback

Tag #	Common Name	DBH	Condition or Defect	Condition or Defect	Condition or Defect	Condition or Defect	Condition or Defect	Condition or Defect	Condition or Defect
972	sweetgum	15	codominant leaders
974	'Crimson King' Norway maple	11	codominant leaders
975	European beech	12	girdling roots suspe
977	European beech	23	girdling roots prese
978	European beech	22	codominant leaders
981	hybrid american elm	17	codominant leaders
984	London planetree	15	hanger
987	Sawara falsecypress	22	codominant leaders
988	Hinoki falsecypress	31	codominant leaders
991	Sawara falsecypress	21	codominant leaders	girdling roots prese
992	Sawara falsecypress	17	codominant leaders
993	Hinoki falsecypress	10	codominant leaders
994	English holly	8	codominant leaders
995	eastern white pine	17	codominant leaders
996	European beech	14	wound-branch
1000	Japanese maple	4	wound-stem

Tag #	Common Name	DBH	Condition or Defect	Condition or Defect	Condition or Defect	Condition or Defect	Condition or Defect	Condition or Defect	Condition or Defect
1002	Ginkgo	37	codominant leaders	wound-stem	wound-root flare
1007	European beech	28	codominant leaders	wound-stem
1008	European beech	8	wound-branch	codominant leaders
1009	European beech	83	cavity-stem	wound-stem (2'x3')	wound-root flare	codominant stems	wound-branch	fungi/conks	5% dieback
1010	littleleaf linden	69	cavity-stem	codominant leaders	wound-stem	cavity-branch
1011	Norway maple	23	wound-stem
1014	littleleaf linden	41	cavity-stem	cavity-branch	deadwood >2
1015	littleleaf linden	25	codominant leaders
1016	littleleaf linden	18	codominant leaders
1018	tuliptree	35	cavity-stem
1019	European beech	31	cavity-stem	wound-stem (2'x13')
1020	littleleaf linden	47	cavity-stem	wound-stem	wound-branch
1022	grand fir	27	wound-stem
1023	littleleaf linden	31	cavity-stem	codominant leaders
1024	Austrian pine	9	uneven crown
1025	European beech	25	codominant leaders	included bark	deadwood >2
1026	balsam fir	17	wound-stem
1027	European beech	46	cavity-stem	wound-stem	wound-root flare	wound-branch

Tag #	Common Name	DBH	Condition or Defect	Condition or Defect	Condition or Defect	Condition or Defect	Condition or Defect	Condition or Defect	Condition or Defect
1030	sweetgum	35	codominant leaders	cavity-branch
1032	Japanese maple	10	lean
1033	English holly	7	planting material
1034	European beech	44	codominant leaders	cavity-stem	wound-root flare
1035	Oriental spruce	27	codominant leaders
1038	European beech	63	codominant leaders	wound-stem	wound-root flare	crack
1042	Norway maple	20	cavity-stem	cavity-branch	deadwood >2
1043	Norway maple	17	wound-stem
1044	sycamore maple	13	cavity-stem
1045	Japanese umbrella-pine	10	codominant leaders
1046	European beech	37	codominant leaders	wound-stem (4'x5')	wound-branch
1047	littleleaf linden	42	codominant leaders
1048	European beech	30	cavity-root flare
1050	European beech	40	wound-stem	codominant leaders
1051	European beech	29	cavity-stem	wound-root flare
1052	green ash	32	cavity-stem	cavity-root flare
1053	European beech	75	cavity-stem	cavity-branch	codominant leaders
1057	littleleaf linden	55	cavity-stem	wound-stem

Tag #	Common Name	DBH	Condition or Defect	Condition or Defect	Condition or Defect	Condition or Defect	Condition or Defect	Condition or Defect	Condition or Defect
1059	littleleaf linden	20	codominant leaders
1065	Japanese umbrella-pine	17	wound-stem	codominant leaders
1067	Japanese umbrella-pine	19	codominant leaders
1068	Oriental spruce	34	codominant leaders
1073	European beech	47	codominant leaders	wound-stem	wound-root	wound-root flare
1075	European beech	54	cavity-stem	codominant leaders	cavity-branch	deadwood >2
1076	European beech	18	wound-stem	wound-branch
1077	European beech	15	wound-stem	wound-branch	codominant leaders
1078	European beech	17	wound-stem	wound-branch
1079	European beech	18	wound-stem	wound-branch	codominant leaders
1082	European beech	23	codominant stems	wound-branch
1083	London planetree	19	girdling roots prese
1084	Norway maple	18	codominant leaders
1086	Norway maple	18	codominant leaders
1088	London planetree	72	cavity-branch	cavity-stem
1090	European beech	45	cavity-stem	wound-stem	deadwood >2

Tag #	Common Name	DBH	Condition or Defect	Condition or Defect	Condition or Defect	Condition or Defect	Condition or Defect	Condition or Defect	Condition or Defect
1091	sweetgum	21	wound-stem
1092	European hornbeam	21	cavity-stem
1093	European beech	46	codominant leaders	wound-stem	wound-root flare	fungi/conks
1098	Atlas cedar	27	hanger	codominant leaders
1103	honeylocust	9	wound-root flare
1104	honeylocust	5	wound-root flare
1105	green ash	13	wound-stem
1106	English oak	13	seam
1109	Norway maple	16	codominant leaders	10% dieback
1132	Turkey oak	43	cavity-stem
1133	English oak	38	wound-stem	cavity-stem
1137	European beech	19	uneven crown
1140	European beech	36	codominant leaders	15% dieback
1143	Norway maple	33	hanger
1145	European beech	18	codominant stems
1147	European beech	60	wound-stem	codominant leaders
1148	European beech	52	wound-stem	codominant leaders
1149	Atlas cedar	26	uneven crown
1161	European beech	36	wound-stem	cavity-stem	10% dieback
1172	European beech	8	wound-stem

Tag #	Common Name	DBH	Condition or Defect	Condition or Defect	Condition or Defect	Condition or Defect	Condition or Defect	Condition or Defect	Condition or Defect
1173	European beech	39	codominant leaders
1178	European beech	46	15% dieback
1185	European beech	47	cavity-stem	cavity-branch	fungi/conks	deadwood >2
1187	Japanese cryptomeria	11	wound-stem
1189	Sawara falsecypress	11	codominant leaders
1190	arborvitae	11	wound-root flare
1191	European beech	67	codominant stems	cavity-stem	cavity-branch	cavity-root flare	wound-branch	fungi/conks	...