

4-1-2006

## Issue Information

Follow this and additional works at: <http://digitalcommons.salve.edu/newporthistory>

---

### Recommended Citation

(2006) "Issue Information," *Newport History*: Vol. 75: Iss. 254, Article 6.

Available at: <http://digitalcommons.salve.edu/newporthistory/vol75/iss254/6>

This Issue Information is brought to you for free and open access by Digital Commons @ Salve Regina. It has been accepted for inclusion in Newport History by an authorized administrator of Digital Commons @ Salve Regina. For more information, please contact [digitalcommons@salve.edu](mailto:digitalcommons@salve.edu).

et al.: Issue Information

# NEWPORT HISTORY

JOURNAL OF THE NEWPORT HISTORICAL SOCIETY

Vol. 75

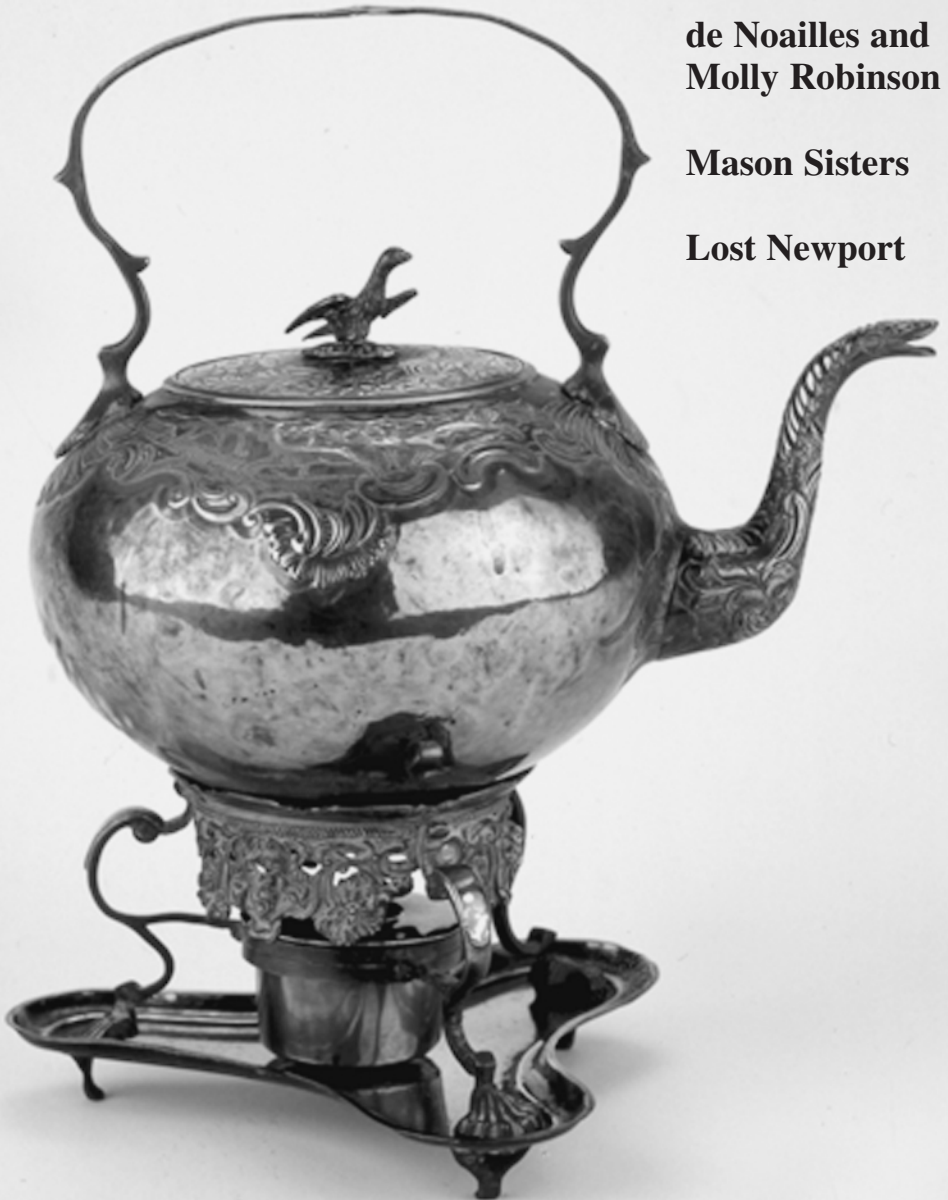
SPRING 2006

Number 254

**de Noailles and  
Molly Robinson**

**Mason Sisters**

**Lost Newport**



*Newport History, Vol. 75 [2006], Iss. 254, Art. 6*

# Newport History

---

JOURNAL OF THE NEWPORT HISTORICAL SOCIETY

Vol. 75

SPRING 2006

Number 254



NEWPORT HISTORICAL SOCIETY

*www.newporthistorical.org*

## OFFICERS

### President

John J. Salesses

### First Vice President

Dennis F. McCoy

### Second Vice President

Richard I. Burnham

### Secretary

J.P. Mark

### Treasurer

Paul A. Steinbrenner

## BOARD OF DIRECTORS

Hope P. Alexander

Barbara Lloyd Baker

Philip M. Bilden

H. William Breyer IV

Bartlett S. Dunbar

Dorienne Farzan

Jessica D. Hagen

Amanda Frye Leinhos

David P. Leys, Sr.

Ronald J. Onorato

Harold W. Sands

Jan D. Slee

E. MacGregor Strauss

## PRESIDENTS EMERITI

Kenneth H. Lyons

Bradford A. Becken

## STAFF

Scott W. Loehr

*Executive Director*

Ann Arnold

*Marketing & Museum Shop Manager*

Lorraine Byrne

*Administrative & Membership Manager*

Jamie Carlson

*Visitor Services*

Jasper Coffman

*Bookkeeper*

Jessica Files

*Director of Education*

Kimberly H. Krazer

*Registrar*

Bertram Lippincott III, C.G.

*Reference Librarian & Genealogist*

Trudy Santos

*Visitor Services*

James L. Yarnall, Ph.D.

*Editor, Newport History*

## PUBLICATIONS COMMITTEE

John B. Hattendorf, D.Phil., co-Chair

Jan D. Slee, co-Chair

Jane Carey

Evelyn Cherpak, Ph.D.

Theodore Gatchel

Curtis LaFrance

Sue Maden

James L. Yarnall, Ph.D., Editor

John J. Salesses, Ph.D., ex-officio

Scott W. Loehr, ex-officio

Cover photo: *Camp kettle used by Noailles during the Revolutionary War, and given by him to the Robinson family. Collections of the Newport Historical Society (NHS 87.1).*

Membership in the Newport Historical Society is renewed annually. Those interested in becoming members are cordially invited to contact the Society or visit its website at [www.newporthistorical.org](http://www.newporthistorical.org). All correspondence regarding membership, including subscriptions to *Newport History*, should be addressed to the Society. *Newport History* is published twice a year by the Newport Historical Society Museum and Library with the assistance of a grant from the State of Rhode Island and Providence Plantations, Donald Carcieri, Governor. Articles appearing in *Newport History* are abstracted in *Historical Abstracts* and/or *America: History and Life* published by the American Biographical Center. *Newport History* solicits original articles on any aspect of Newport County history. All submissions will be considered by the Publications Committee for publication. Obtain information from the editor by contacting Society headquarters.

Copyright ©2006 by the Newport Historical Society, 82 Touro Street, Newport, RI 02840; (401) 846-0813. USPS 384380. All rights reserved. Printed by R.E. Smith Printing Company, Fall River, MA. Periodicals postage will be paid at Newport, RI, ISSN 0028-8918. **Postmaster: send address changes to Newport Historical Society, 82 Touro Street, Newport, RI 02840.**

Printed on recycled paper.

# TABLE OF CONTENTS

**Editor's Note** ..... v

**Cultural Refraction in Letters: The Epistolary Relationship of  
Viscount de Noailles and Molly Robinson, 1780-1804** ..... 1  
*Caroline Frank*

**The Mason Sisters of Newport  
and their Rhode Island Avenue Mansion** ..... 30  
*Bertram Lippincott III*

**Lost Newport - Part II** ..... 42  
*Paul F. Miller*



Mason House under construction, 1902

## **The Newport Historical Society Museum and Library**

The Newport Historical Society has maintained a library and museum of Newport and Rhode Island history since its incorporation in 1854. For almost 150 years the Society has continued to grow in membership and in the extent and diversity of its collection.

Society activities include lectures, walking tours, and educational outreach programs and special events. The *Seventh Day Baptist Meeting House*, built in 1730, now attached to the main building, is a treasure of colonial architecture. The library and manuscript collections contain a wealth of information for researchers.

*HOURS:* The Society's research facilities are open to the public  
Tuesday through Friday 9:30 A.M. to 4:30 P.M.  
Saturday 9:30 A.M. to 12 Noon

For information on current exhibits and programs please call (401) 846-0813 or visit the Society's website at [www.newporthistorical.org](http://www.newporthistorical.org).

The *Museum of Newport History at the Brick Market* is an entertaining, multidimensional exhibit of over 350 years of Newport history told through objects, images, and paintings, as well as state-of-the-art interactive computers and videos. On display are examples of Newport's finest colonial furniture and manuscripts, as well as artifacts representing all walks of life from Newport's colorful past.

The *Wanton-Lyman-Hazard House*, 17 Broadway, illustrates the history of Colonial America through the daily life of individual Newporters. Open Seasonally.

The *Great Friends Meeting House*, built in 1699 and the oldest religious structure in Newport, is open seasonally.

# Become a Member of the Newport Historical Society

## Membership Benefits

- ❖ Unlimited free admission to the award-winning **Museum of Newport History** at the Brick Market.
- ❖ Free copy of *Newport: A Short History*, a lively history of the area from its settlement by Native Americans.
- ❖ Subscription to the semi-annual journal *Newport History*, which contains a variety of articles on Newport County's past, and a periodic newsletter with information about the Society's activities.
- ❖ Reduced admission to Walking Tours of Historic Newport.
- ❖ Free admission to the Society's historic sites: The **Wanton-Lyman Hazard House**, the **Friends Meeting House**, and the **Seventh Day Baptist Meeting House**.
- ❖ Reduced rates for all educational programs, special events, and activities.
- ❖ Reduced rates on all services (photographic, genealogical research, etc.)
- ❖ Discount on all items sold by the Society.

---

## Membership Form

NH

1854 Society	\$1,000 _____	Individual	\$50 _____
Patron	500 _____	Library/Museum*	35 _____
Sponsor	250 _____	Student**	25 _____
Household/Family	100 _____		

*Complete and mail this form with check for appropriate amount to:  
The Newport Historical Society, 82 Touro Street, Newport, RI 02840*

Name \_\_\_\_\_

Street \_\_\_\_\_ Phone \_\_\_\_\_

City \_\_\_\_\_ State \_\_\_\_\_ Zip Code \_\_\_\_\_

\*Institutional membership only

\*\*Current student I.D. required

NEWPORT HISTORY (ISSN 0028-8918)  
Newport Historical Society  
82 Touro Street  
Newport, Rhode Island 02840

PRSR STD 7  
U.S. POSTAGE PAID  
NEWPORT R.I. 02840  
PERMIT # 82